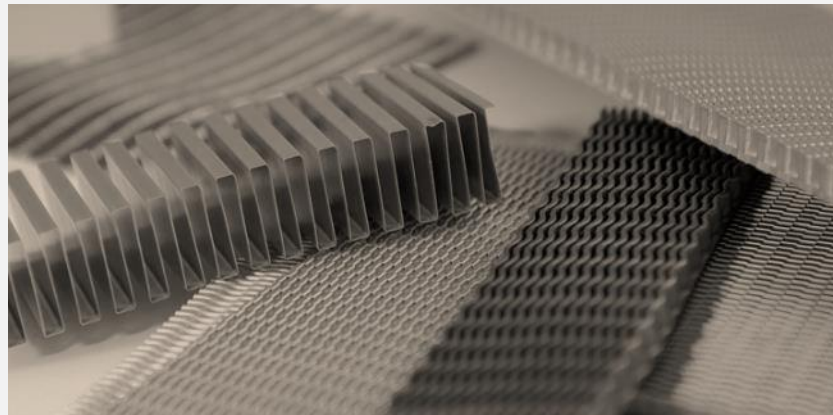


Passionate and Dedicated to your Needs



TAT 
Limco
Thermal Solutions

Company Profile

Legal Entity Name:	LIMCO Airepair, Inc.
Founded:	1946
Headquartered:	Tulsa, Oklahoma
Products:	Heat Transfer, Air Conditioning
Employees:	180
Facilities:	93,000 sq. ft., Owned on 4.3 Acres
President:	Greg Watson
Annual Revenue:	\$40M
Parent Company:	TAT Technologies Ltd.

Facilities



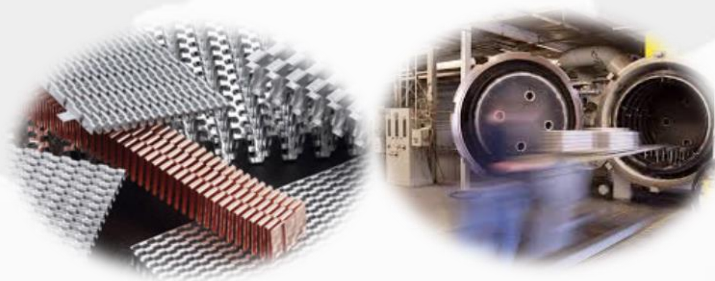
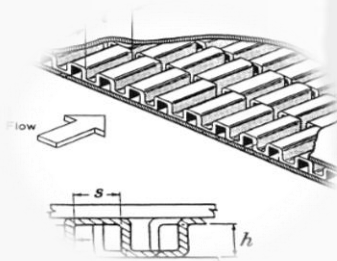
Thermal Management Systems

Capabilities:

- Full range of in-house design, development and production capabilities
- Addressing various clients needs (Design-to-Spec / Build-to-Print).

Types of Solutions:

- Vacuum Brazing based solutions covering wide range of fluids and mediums:
 - Air-Oil / Fuel-Oil Coolers
 - Air-Air / Liquid-Air Heat Exchanger
 - Air-Air Precooler
 - ECS Evaporator & Condenser



H-1 Heat Exchanger



 **BOEING**
737 / 777 Oil Cooler



 **NORTHROP GRUMMAN**
Global Hawk Heat Exchanger

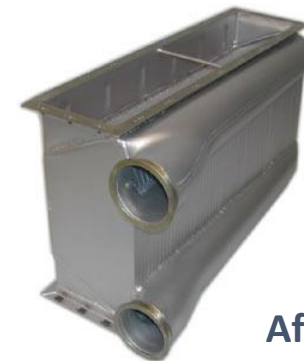
Thermal Management Systems

Capabilities:

- Full range of in-house Engineering, Servicing and Testing capabilities

Types of Services:

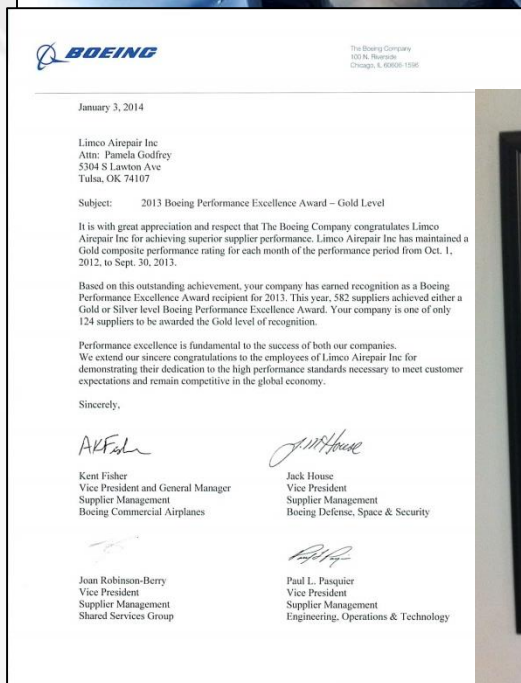
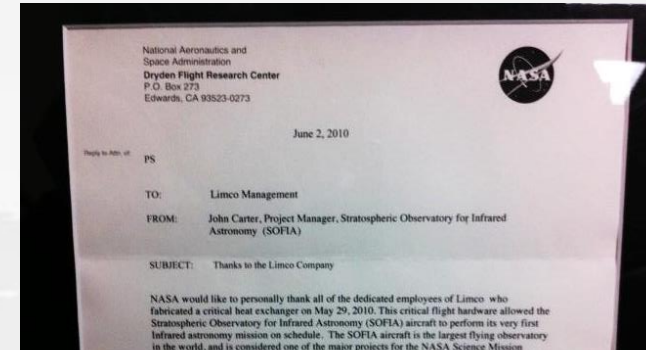
- Complete range of MRO services :
 - Clean & Test
 - Repair
 - Overhaul
 - Recore



Boeing Performance Excellence Awards



Customer Recognition



Platforms

Commercial
Aircraft



Military
Aircraft



Naval
Vessels



Specialty
Programs



Commercial Products

- ☐ Heat Exchangers
- ☐ Oil Coolers
- ☐ Reheaters, Condensers
- ☐ Precoolers
- ☐ Ozone Converters
- ☐ Fuel Heaters
- ☐ Water Extractors
- ☐ Cold Plates
- ☐ Air Conditioning Systems
- ☐ Demineralizing Systems



Engineering

Dedicated R&D Team

- Design of new products
- Reverse engineering for MRO

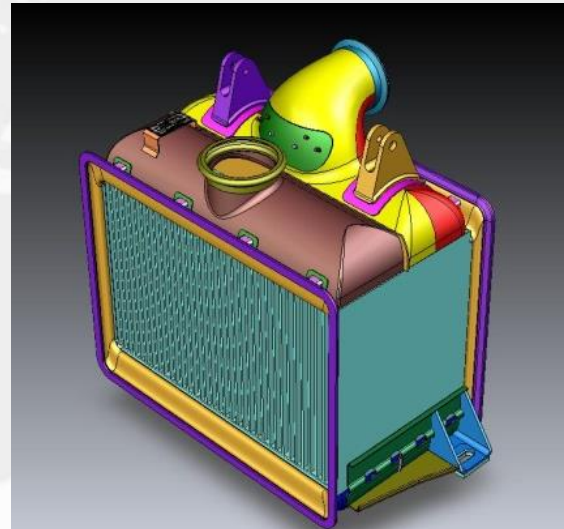
Process Engineering

- Maintains existing products/capabilities
 - OEM and MRO

Design and Analytical Tools

- Proprietary Design Software
- SolidWorks, CATIA V5/V6
- CFD Capabilities
- FEA Capabilities
- Performance Testing Facilities
- ATP, QTP Testing
- Romer Inspection Arm/3-D Scanner
- Failure Analysis

3-D Modeling



- *SolidWorks*
- *CATIA V5/V6*

Engineering

Dedicated R&D Team

- Design of new products
- Reverse engineering for MRO

Process Engineering

- Maintains existing products/capabilities
 - OEM and MRO

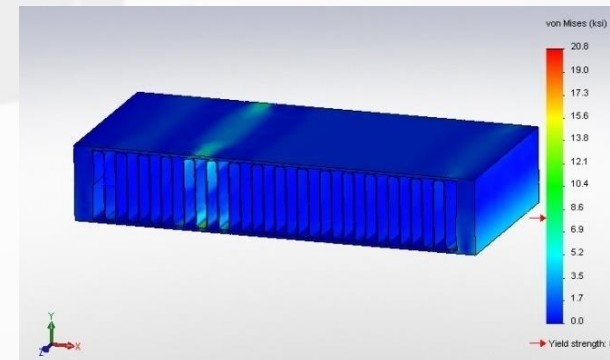
Design and Analytical Tools

- Proprietary Design Software
- SolidWorks, CATIA V5/V6
- CFD Capabilities
- FEA Capabilities
- Performance Testing Facilities
- ATP, QTP Testing
- Romer Inspection Arm/3-D Scanner
- Failure Analysis

Computational Fluid Dynamics (CFD) Capabilities



Flow Simulation



Heat Stress Analysis

Engineering

Dedicated R&D Team

- Design of new products
- Reverse engineering for MRO

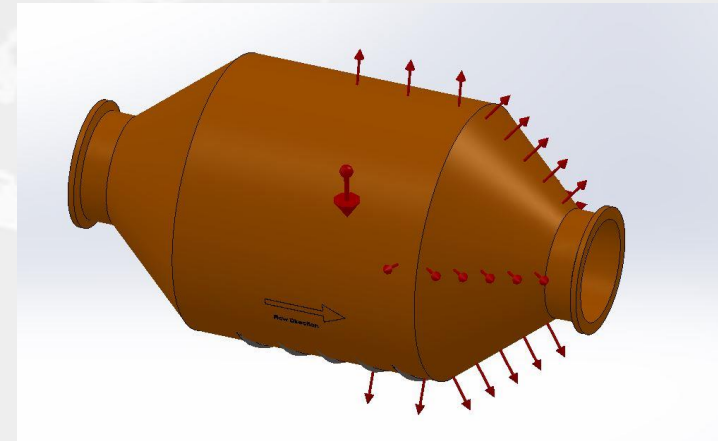
Process Engineering

- Maintains existing products/capabilities
 - OEM and MRO

Design and Analytical Tools

- Proprietary Design Software
- SolidWorks, CATIA V5/V6
- CFD Capabilities
- FEA Capabilities
- Performance Testing Facilities
- ATP, QTP Testing
- Romer Inspection Arm/3-D Scanner
- Failure Analysis

Finite Element Analysis (FEA) Capabilities



- *Linear static analysis*
(Stresses or deformations)
- *Modal Analysis*
(Vibration characteristics)
- *Transient nonlinear analysis*
(Dynamic effects and complex behaviors)

Engineering

Dedicated R&D Team

- Design of new products
- Reverse engineering for MRO

Process Engineering

- Maintains existing products/capabilities
 - OEM and MRO

Design and Analytical Tools

- Proprietary Design Software
- SolidWorks, CATIA V5/V6
- CFD Capabilities
- FEA Capabilities
- Performance Testing Facilities
- ATP, QTP Testing
- Romer Inspection Arm/3-D Scanner
- Failure Analysis

3-D Laser Scanning



Engineering

Dedicated R&D Team

- Design of new products
- Reverse engineering for MRO

Process Engineering

- Maintains existing products/capabilities
 - OEM and MRO

Design and Analytical Tools

- Proprietary Design Software
- SolidWorks, CATIA V5/V6
- CFD Capabilities
- FEA Capabilities
- Performance Testing Facilities
- ATP, QTP Testing
- Romer Inspection Arm/3-D Scanner
- Failure Analysis

Failure Analysis




Quality

Quality System

- AS9100:2009, Rev. D
- ISO 9001:2008
- AS9110, Rev. C

Accreditation

-  (Nondestructive Testing)
(Welding)

Certificates

- FAA CZ2R760K
- EASA 145.4153
- DGAC 145/69000 (Indonesia)
- DCA 86/2533 (Thailand)
- CAAC F00100716 (China)



Major Customers



Manufacturing

- Design to Envelope & Specifications
- Build to Print



Materials

- *Aluminum*
- *Stainless*
- *Inconel*
- *Copper*
- *Titanium*

Configurations

- *Air to Air*
- *Oil to Air*
- *Oil to Oil*
- *Fuel to Air*
- *Fuel to Oil*
- *EGW to Air*
- *PGW to Air*
- *Water to Air*
- *Freon to Air*

Military Product Examples



V-22 Mid-wing Gearbox
Oil Cooler



HondaJet Heat Exchanger



Patriot Dual Heat Exchanger



E-4A Oil Cooler



UH-60 AMOGS
Heat Exchanger



C-135 Heat Exchanger



Global Hawk
Heat Exchanger



MK-45 Heat Exchanger

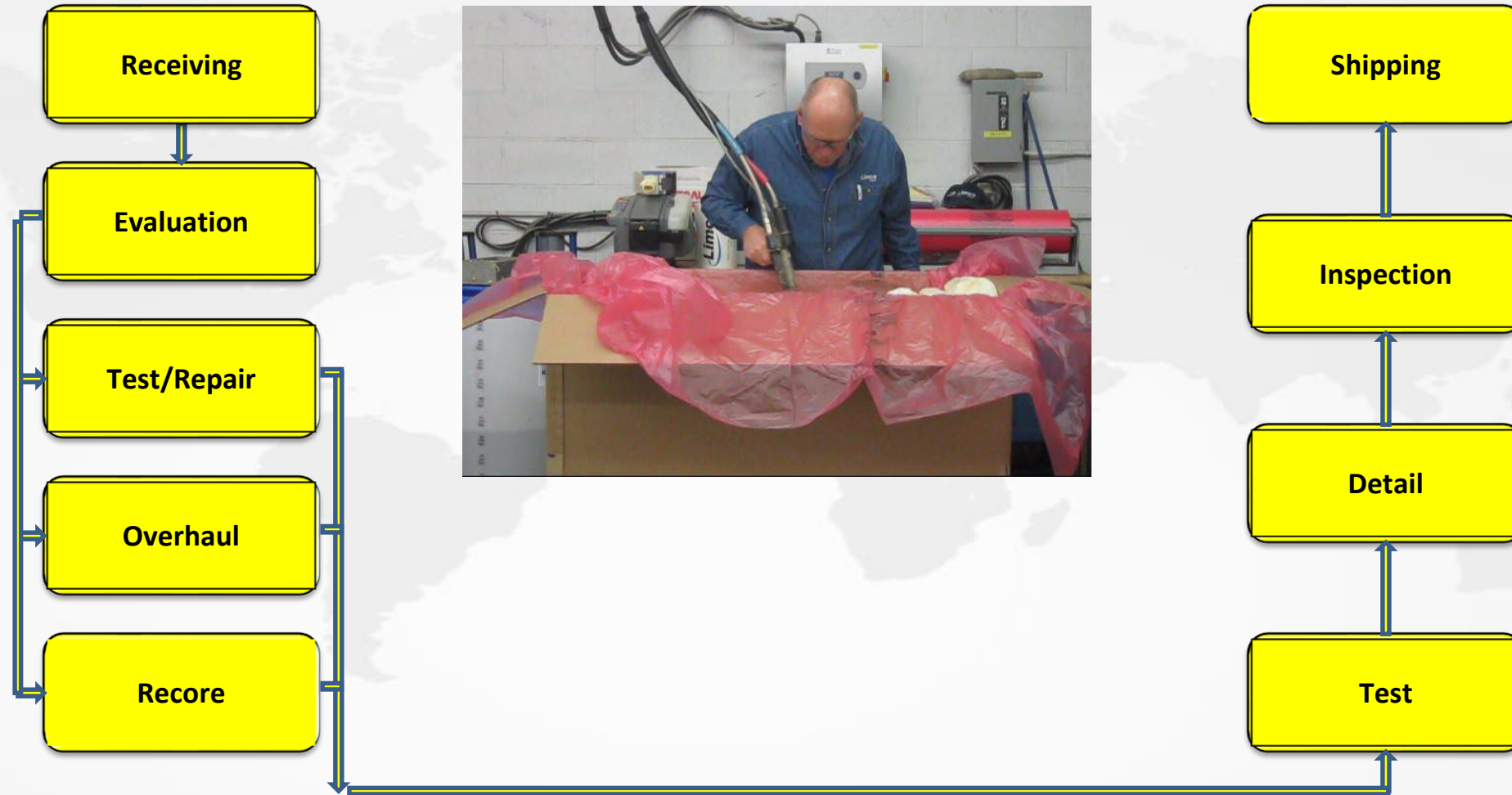


H-1 Heat Exchanger



F-5 Cold Plate

Maintenance, Repair & Overhaul



Product Examples

Plate/Fin
Cores



A320 Main Heat Exchanger



Q400 Heat Exchanger

Tube-Type
Cores



A320 Precooler



CF6 Precooler

Ozone
Converters



A320 Ozone Converter



767 Ozone Converter

World Class Operation

- ❑ Over 73 years as a Heat Transfer leader
- ❑ Over 300 customers world-wide
- ❑ 16% of staff in engineering and R&D capacity
- ❑ Gold and outstanding ratings from our customers
- ❑ All work performed in-house
- ❑ > 95% on-time delivery for OEM
- ❑ < 14 days average turn-around time for MRO
- ❑ 24/7 availability

A hand is shown from the bottom left, holding a brown paper airplane. The airplane is angled upwards towards the top right. The background is a bright sky filled with soft, white clouds. A large, semi-transparent white graphic element, resembling a stylized 'A' or a series of curved lines, is positioned on the left side of the image. The text 'Thank You' is written in a bold, orange-red font, slanted upwards, and positioned across the middle of the paper airplane.

Thank You